

# ACCESSORIES

## STEPPING MOTOR ENCODERS

### ENCODERS

Stepping motors are available with single-end or differential output, dual channel incremental optical rotary encoders for closed loop position control. These come standard with quadrature style outputs (Channels A & B) and an index mark, except where noted.

Line counts: 100, 200, 250, 400, 500, 1000, 2000. Encoders may be ordered factory-mounted to the motor or as separate ready-to-mount encoder kits. \*

\* Encoders for size 42 motors are only available as kits.

Encoder Line Count	Factory-Mounted Encoders	Encoder Kits
100	X* E (S/D**) - 100	E (S/D**) XX* - 100 - K
200	X* E (S/D**) - 200	E (S/D**) XX* - 200 - K
250	X* E (S/D**) - 250	E (S/D**) XX* - 250 - K
400	X* E (S/D**) - 400	E (S/D**) XX* - 400 - K
500	X* E (S/D**) - 500	E (S/D**) XX* - 500 - K
1000	X* E (S/D**) - 1000 <sup>1</sup>	E (S/D**) XX* - 1000 <sup>1</sup> - K
2000	—	E (S/D**) XX* - 2000 <sup>2</sup> - K

\* X Motor Part Number, ex. M-1713-1.5 for size 17 stepping motor

XX Motor Frame Size, i.e. 14, 17, 23, 34 or 42

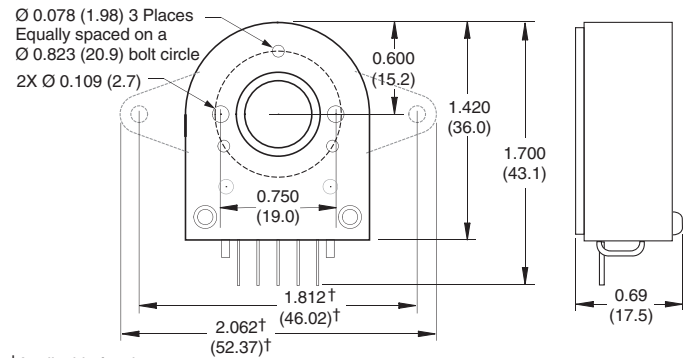
\*\*S/D S = Single-End Encoder, D = Differential Encoder

<sup>1</sup> Not available with index mark

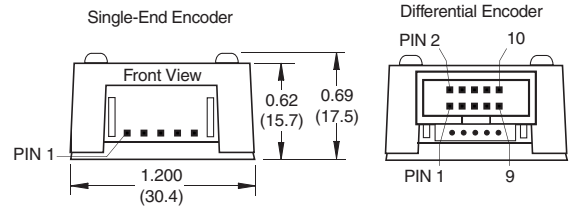
<sup>2</sup> Not available with Size 14 motor

### Encoder – 100 to 1000 Line Count

Dimensions in Inches (mm)



† Applicable for size 34 & 42 stepping motors



### Encoder – 2000 Line Count

